

PUBLIC

AUCTION

Bidspotter.com
To Become a Qualified Bidder on the Internet
See Instructions on Page 2

PLANT CLOSED

Webcast Auction – Former Assets of Lighting Reflector Plant Featuring CNC Metal Spinning Lathes, Hydraulic & Mechanical Presses, Anodizing Lines, Polishing Systems, Fab Equipment, Robots, Lift Trucks, Toolroom Machinery, Pallet Rack and Large Quantity of Shop & Support Equipment



HUBBELL LIGHTING

216 Mims Drive – El Dorado, Arkansas 71730

SALE DATE: THURSDAY, OCTOBER 14TH, STARTING AT 9:00 AM CT

INSPECTION: WEDNESDAY, OCTOBER 13TH FROM 10:00 AM TO 4:00 PM



NEW AS
2006

(5) 25.59" x 27.55" M&M Model TT 350 Tracktronic CNC Metal Spinning Machines

\$400K
UPGRADE-
2016



State of the Art Automated Anodizing Line



Timac Model TCDS 310 Circle Shear



634 Ton Cincinnati Model 25-6-10 Hydroform Press State of the Art Automated Anodizing Line



150 Ton Beckwood 4-Post Hydraulic Forming Press



15" x 50" Clausing Colchester Model 15 Geared Head Engine Lathe



45.28" x 47.24" M&M Model HF350/600ATT Tracktronic CNC Metal Spinning Machine



(1 of 5) 25.59" x 27.55" M&M Model TT 350 Tracktronic CNC Metal Spinning Machines



(1 of 5) 25.59" x 27.55" M&M Model TT 350 Tracktronic CNC Metal Spinning Machines



(1 of 5) 25.59" x 27.55" M&M Model TT 350 Tracktronic CNC Metal Spinning Machines



(1 of 5) 25.59" x 27.55" M&M Model TT 350 Tracktronic CNC Metal Spinning Machines

METAL SPINNING MACHINES

45.28" x 47.24" M&M Model HF350/600ATT Tracktronic CNC Metal Spinning Machine; S/N 03-6847-06, 45.28" Blank Diameter, 23.62" Center Height, 47.24" Distance between Centers, Size 6 Tooling Adaptor Z-Axis, Voltage: 400 VAC, 3 Phase, F.L.A.: 100 AMP, Motor Size F.L.A.: 41 AMP, CNC Control (New 2006)

(5) 25.59" x 27.55" M&M Model TT 350 Tracktronic CNC Metal Spinning Machines; S/N 05-6846-06 (2006), 05-6198-05 (2005), 5-5107-02 (2002), 5-1679-97 (1997), & 5-1270-95(1995), 25.59" Blank Diameter, 13.77" Center Height, 27.55" Distance between Centers, ISO 702 /III Dim. 6 Tooling Adaptor Main Spindle, Main Drive Motor: 11kW, 0 to 4,000 RPM, Longitudinal Slide: Travel – 13.77", Feed Force – 10 kN, Feed Rate – 0 to 10 m/min,

Top Slide: Travel – 11.81", Feed Force – 10 kN, Feed Rate – 0 to 10m/min, Tailstock: 11.81 Mechanical Stroke, 3-10 kN Clamping Force, Ejector Mechanical Stroke: 5.90", Hydraulic System Motor Rating: 5.5 kW, Cooling Water Flow Rate: 13 L/min, Total Power Rating: 18 kW, Tracktronic CNC Control, Single Roller Machines – S/N's 5-1270-95, 5-6198-05, 05-6846-06; Double Roller Machines – S/N's 5-1679-97 & 5-5107-02

(6) Manual Spinning Lathes by E.O. Grabo, Garden State, Haag, P. Prybil, Spin Master & Others

TRIMMING/BEADING MACHINES

(3) Omera Model R2/4 Trimming/Beading Machines; S/N 20420 & 20421 (1995), 20053 (1984), (1) Three-Head & (2) Single Head Trimmers

HYDROFORM PRESSES

634 Ton Cincinnati Model 25-6-10 Hydroform Press; S/N 70-308-F-006-1, 25" Max Blank Diameter, 10" Draw, 12.75" Stroke, 25" Daylight, 19" Punch Dia., 15 Ton Punch Strip, 6,000 PSI, Bed Bolster: 32" L-R x 33.5" F-B, Slide Bolster: 32.75" L-R x 33.5" F-B, Distance between Pin Guides: 25" x 23.5", 518 IPM Speed of Operation Chamber Down Speed, 60 IPM Forming Speed, 380 IPM Stripping Speed, 293 Chamber Return Speed, Machine Cycle: 517/HR, Equipped with Rear Tool Changer, Overall Dimensions: 105" x 109" x 192.38" High

368 Ton Cincinnati Model 20-6-7 Hydroform Press; S/N 73-444-F-647-1, 20" Max Blank Diameter, 7" Draw, 15" Punch Dia., 9 Ton Punch Strip, 6,000 PSI, 26" L-R x 30" F-B

WEBCAST BIDDER INSTRUCTIONS

- > All Internet bidders must register for this auction at www.bidspotter.com at least 48-Hours Prior to the Sale Date, **if you do not you will not be approved.**
- > All Internet bidders must Post a Deposit of Approx. 25% of Your Planned Spending Budget or \$5,000.00 Minimum with Cincinnati Industrial Auctioneers in Order to be approved to Bid. Those who do Not Post the Deposit Will Not be Approved. **Period.**



(1 of 3) Omera R2/4 Trimming/Beading Machines



Timac Model TCDS 310 Circle Shear



634 Ton Cincinnati Model 25-6-10 Hydroform Press



368 Ton Cincinnati Model 20-6-7 Hydroform Press



150 Ton Beckwood 4-Post Hydraulic Forming Press

368 Ton Cincinnati Model 15-10-7 Hydroform Press; S/N 68-300-F-841-1, 15" Max Blank Diameter, 7" Draw, 12" Punch Dia., 9 Ton Punch Strip, 10,000 PSI, 26" L-R x 30" F-B (Out of Service)

HYDRAULIC PRESSES

150 Ton Beckwood 4-Post Hydraulic Forming Press; S/N N/A, 18" Stroke, 10" Shut Height, 28" Max Daylight, 36" Bed Height

75 Ton Dake Model 27-597 Guided Platen Hydraulic Press; S/N 161515, 35" L-R x 40" F-B, 3.5" Posts, 52" Max Daylight Opening, 6" / 4.75" Main Ram

50 Ton Logan 4-Post Hydraulic Press; S/N N/A, 97" L-R x 20" F-B, 4" Post, 40" Max Daylight Opening, 8" / 5.5" Main Ram

Prince Model 349 4-Post Hydraulic Press; S/N N/A, 32" L-R x 30" F-B Bed Size, 30" Approx. Daylight Opening, 3-1/2" Posts, 5-1/2" Main Ram, Light Curtains, Push Button Operated

50 Ton Multipress Model FN50-30H C-592E SO.99270-C Gap Frame Hydraulic Press; S/N 27279

GAP FRAME MECHANICAL PRESSES

80 Ton Komatsu Model OBS 80-5 Gap Frame Mechanical Press; S/N 12530 (1989), 60-120 SPM, 3.94" Stroke, 13.78" Die Height, 3.15 Slide Adjustment, 21.65" L-R x 17.72" F-B Slide Dimensions, 39.37" L-R x 23.62" F-B x 5.51" Thickness Bolster Dimensions, with Light Curtains, 20" PA Industries Advantage Servo Roll Feeder, 20" PA Industries Model 55-19-S Straightener, S/N 17063-1-57763, 20" PA Industries Coil Reel



50 Ton Logan 4-Post Hydraulic Press



80 Ton Komatsu Model OBS 80-5 Gap Frame Mechanical Press



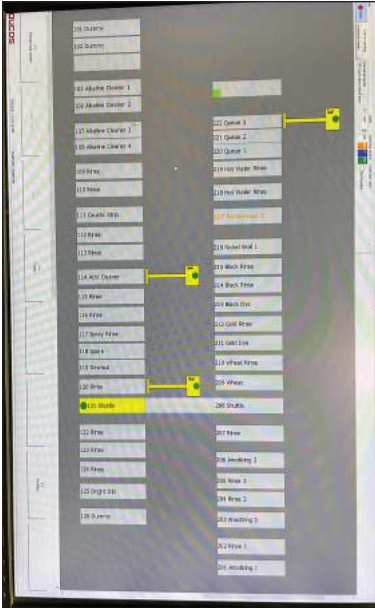
50 Ton Multipress Model FN50-30H C-592E SO.99270-C Gap Frame Hydraulic Press



75 Ton Dake Model 27-597 Guided Platen Hydraulic Press



Scan Here for our YouTube Playlist Featuring Operating Machines!



Updated Control System – 2016



37-Tank State of the Art Automated Anodizing Line with RO Systems, Rectifiers, Steam Boiler & More



Viron Air Scrubber and Tri-Mer Blower Fan



SLY Model Venturi #8 Dust Collection System



Walgren Co. Waste Treatment System

ANODIZING LINES

State of the Art Automated Anodizing Line; 37 Tanks System, (3) 200 LB Walgren Hoists with Laser Positioning, VFD Control for Travel/Lift/Drop, Electrical Brakes, Aucos AG Anodize Line +S01 Main Cabinet with Transport System & Process Control, Line Number: A2945, Order Number 162103, Items controlled: (3) Hoists, (1) Wet Transfer Shuttle Single Speed, Position by Switch, (1) Load Station with Height Adjust & Cart Verification, (1) Unload Station Height Adjust with Cart Verification, (16) Temp. Monitors by RTD pt100, (13) Steam Solenoids, (3) Cooling Solenoids, (3) Rectifiers, (3) Radio Remote Controllers; Comes with (1) Lead Computer, (3) Operator Terminals, Rite Boilers Model 3755 Natural Gas Steam Boiler, S/N 31549, Max BTU/HR: 3,750,000; (2) Culligan G2-8 RO Systems, (2) 3,000 GAL Poly Tanks, (3) Superchanger Water

Chillers Model UX-056-UJ-20; 25 HP Hoffman Air Make Up Unit, (2) Dynapower Model SD42-02400202-AVCP & SD42-02400202-FKLX-6MXX Water Cooled Rectifier, 24DC, 2,000 AMP; (1) Dyna-Power Air Cooled Rectifier S/N 504526-001-001, 24V, 2,000 AMP; Eco-Tech Model D08+ Ano-Pur Anodizing Acid Purification Unit, S/N 3284, (2) 60"x36"x47" Tanks & (35) 60" x 78" x 48" Tanks; With 15 HP Tri-Mer Model 40-Fan-CW-UB Blower Fan, S/N 6208, 18,000 CFM & VIRON Model VCB-BD-PVC-FRP-9W-CW360-25-TEFC-PRE M-460-3-60 Air Scrubber, S/N 1117P0064 (New 2017)

Rectifier, S/N 701864/02-01 (2016) 500 AMP, 18V, Complete with Various Pumps

12 Tank Technic Manual Anodizing Line; S/N N/A (New 2016) with Technic Model Anodize Cooling Circulation S/N 90726 (2016), (2) Integrated Fume Hoods, Technic Model TB-DLC301-LCA1 S/N 418215, Technic Model TT-DLC12-I-V Temp Controllers, American Plating Power Type RC-1DP18/500-24VN-C0

WASTE WATER TREATMENT SYSTEM

Walgren Co. Waste Treatment System; (6) Warner Fiberglass Products Tank System – (1) Sludge Tank - 8,000 Gal. x 10' Dia. X 186" OAH, (1) Phos. Reclaim Tank - 4,000 Gal. x 10' Dia. x 15' OAH, (2) Dump Tanks – 1,500 Gal. x 6' Dia. x 8' H, (2) Neutral Tanks – 1,000 Gal. x 5' Dia. x 8' H, (3) Lightnin Mixers, with Misc. Pumps & Control

AUTOMATED POLISHING SYSTEMS

6-Station Dan Technology Machine Type Rotary Table 6 Station + 4 Internal Unit + 1 External Unit Automated Polishing & Grinding Machine; S/N 6996 (2009)



12 Tank Technic Manual Anodizing Line



6-Station Dan Technology Machine Type Rotary Table 6 Station + 4 Internal Unit + 1 External Unit Automated Polishing & Grinding Machine



Thermwood Model C67 2-Head 5-Axis CNC Router

6-Station Mapos Italiana Automated Polishing System; S/N 2148.99 (1999)

CNC ROUTER

Thermwood Model C67 2-Head 5-Axis CNC Router; S/N C673460605, 120" X Axis, 60" Y Axis, 24" Z Axis, 360 Degree 4th Axis & 5th Axis, 7.5 HP Double End Colombo Spindle, 18,000 RPM, 5' x 5' Table Vacuum Table with 5 HP Motor, 9100 CNC Super Controller Version 5.05 (2005)

TURRET PUNCH PRESS

20 Ton Amada Aries 245 Turret Punch Press; S/N 24500230, 20 Station Turret, (2) Auto Index, Thick Tooling, Amadan 04PA Control, 40" x 100" Max Sheet Size, 0.177" Max Sheet Thickness, 300 Strokes/Min., 1.26" Stroke, 50" X Travel, 403" Y Travel, 40" Throat

PRESS BRAKE

25 Ton x 47.3" Amada RG-25 Press Brake; S/N 255417, 47.3" Length of Bed, 49.3" Max Bending Length, 40.2" Distance Between Uprights, 7.88" Throat Depth, 3.94" Length of Stroke, 14.58" Open Height, Light Curtains

SHEARS

10' x 10 Ga. Niagara Model IR-10 Power Squaring Shear; S/N 65228

52" x 12 Ga. Wysong Model 1252 Power Squaring Shear; S/N P13-1544

CIRCLE SHEARS

Timac Model TCDS 310 Circle Shear; S/N 504, 32" Throat (1997)
Omera Circle Shear; Model & S/N N/A

42" May Model MTC-42 Circle Shear; S/N 1454 (1998) 0-350 RPM Spindle Speeds

42" May Model 42V3/4 Circle Shear; S/N 1092 (1992) 350 RPM Spindle Speeds

Libert Model 430 High Speed Floor Circle Shear; S/N A2371, 30" Throat

ROBOTS

(2) ABB Type IRB4600-M2004 & IRC5-M2004 6-Axis CNC Robots; S/N 4600-501215 & 4600-500824, Pendant Controls (New 2014)

LATHES

15" x 50" Clausing Colchester Model 15 Geared Head Engine Lathe; S/N VT-0091-234, Mitutoyo Model KA-12 Digital Readout, 2-1/8" Approx. Thru Hole, 15 - 2,500 Spindle RPM, 10" 3-Jaw Chuck

15" x 50" Clausing Colchester Model 15 Geared Head Engine Lathe; S/N 6/0055/32555DD, w/ Newall Model DP700 Digital Readout,

2-1/8" Approx. Thru Hole, 25 - 2,000 Spindle RPM, 12" 4-Jaw Chuck, 3-Phase, 230-Volt

15" x 50" Clausing Colchester Model 15 Geared Head Engine Lathe; S/N 6/0016/21780, 1-3/8" Thru Hole, Four-Way Quick Change Tool Post Holder, 25 - 2,000 Spindle RPM, 3-Phase, 208-Volt, 10" 3-Jaw Chuck

18" x 40" MSC Geared Head Engine Lathe; S/N N/A, Asset #ELD00202, w/ Anilam Wizard 100 Digital DRO Display, 2-1/2" Approx. Thru Hole, 44 - 1,200 Spindle Speeds

VERTICAL MILLING MACHINES

3 HP SWI Model Trak DPM CNC Vertical Milling Machine; S/N 97-2835, w/ Proto Trak SMX CNC Control Installed in 2019, 10" x 50" Power Feed Table, 70 - 4,200 Spindle RPM, 3-Phase, 220-Volt

3 HP Hurco Model SM1 Vertical Milling Machine; S/N SB-8016045, 9" x 42" T-Slotted Table, 60 - 4,000 Spindle RPM, Mitutoyo Model GML-8705W DRO

1-1/2 HP Ex-Cell-O Style No. 602 Vertical Milling Machine; S/N 6023986, w/ Mitutoyo Digimatic DRO Display, Servo Type 140 Power Table Attachment, 100 - 3,800 Spindle RPM, 9" x 48" T-Slotted Table



20 Ton Amada Aries 245 Turret Punch Press



25 Ton x 47.3" Amada RG-25 Press Brake



HD EMD Hammond Buffer



10' x 10 Ga. Niagara Model IR-10 Power Squaring Shear



(2) ABB Type IRB4600-M2004 & IRC5-M2004 6-Axis CNC Robots



Libert 430 Circle Shear & Misc. Pneumatic Punches

NEW 2014



15" x 50" Clausing Colchester Model 15 Geared Head Engine Lathe



3 HP Hurco Model SM1 Vertical Milling Machine



3 HP SWI Model Trak DPM CNC Vertical Milling Machine



15" x 50" Clausing Colchester Model 15 Geared Head Engine Lathe



(2) Lindberg Electric Furnaces



20" DoAll Model 2013-V Vertical Band Saw



24" Grob Model NS24 Vertical Band Saw



Large Quantity Miscellaneous Toolroom Machinery

MISC. TOOLROOM MACHINERY

DeVlieg 43H-48 Spiramatic Jigmill Horizontal Boring Mill; S/N 8289
 4' Arm x 12" Column Fosdick Radial Arm Drill; S/N 96317, 60 - 1,200 Spindle RPM, 24" x 48" T-Slotted Table, 3-HP Motor, 3-Phase, 208 - 220/440 Volt
 23" Leland - Gifford Heavy Duty Single Spindle Floor Drill; s/n N/A, Asset # ELD0212

6" Hammond Model VH-6B-D Vertical Belt Sander; s/n 8198, 1,735 Max RPM, 3-Phase, 220-Volt, 2-HP Motor

8" Standard Electric Co. Model 100 Double End Floor Grinder; s/n 49991

10" Kalamazoo Model K10 Stand Mounted Abrasive Cut-Off Saw; s/n N/A

16" Rockwell Cat. No. 17-600 Floor Drill; s/n 1785173

(2) Hammond 16" Arm Dual Compartment Buffing Stations w/ Rear Exhaust

Sunnen MBB-1600-MS Precision Honing Machine; S/N 43229

250-Amp Miller Model AC/DC Gas Tungston-Arc Or Shielded Metal Arc Welding Power Source; s/n HH043609

300-Amp Miller 330 A/BP Constant Current AC/DC Arc Welding Power Source; s/n JB549580

250-Amp Esab Model Migmaster 250 Mig Welding Power Source; s/n MA-1741155

250-Amp Lincoln Electric Model

Idealarc 250 Arc Welding Power Source; s/n AC-679865

Plasmarc Model PCM-70 Plasma Cutting Machine

(2) Oxy-Acetylene Carts w/ Hoses, Gauges & Torch

Couth/Mecco PNB 700 Press/Marking System; S/N L126

Chicago Pneumatic Model 450 Pedestal Compression Riveter; s/n H805566, 32" Mandrel, 18" Arm, Cap. Unknown / 10,000 Lb. Approx.

Large Quantity of Misc. Toolroom Machinery & Spare Tooling;

Workbenches, Arbor Presses, Cabinets, Hand Tools, Power Tools, Toolboxes, Rod Benders, Drill Presses, Finger Brakes, Roll Benders, Pexto Manual Bearer, Rockwell Hardness Tester, H-Frame Presses, Gorton Model 375 Drill Sharpener, DE Grinders, Sanders, Chop Saws, Jet JDC-500 Metal Dust Collector, Ridgid Pipe Threader, Shop Cranes

Large Quantity of Misc. Machine Accessories & Spare Tooling;

Indexable Tooling, HSS Drills, Reamers, Taps, End Mills, Carbide Inserts, Collets, Grinding Wheels, Die Mold Springs, Live Centers, Lathe Chucks, Face Plates, Toolholders, Boring Bars, Morse Taper Drills, Steel Shims, L-W Chuck Dividing Head, 10" Kamakura Rotary table, Mill Vises, Holdowns, Angle Plates, Sine Plates, Spin Fixtures, Dumore Tool Grinder

VERTICAL & HORIZONTAL BAND SAWS

12" DoAll C-9V Horizontal Band Saw; S/N 296-72162

20" DoAll Model 2013-V Vertical Band Saw; S/N 500-981893, w/ DoAll Model DBW-15 Blade Welder, 154" Blade Length, 3-Phase, 230-Volt

24" Grob Model NS24 Vertical Band Saw; s/n 2690, w/ Grob RW-B Blade Welder

18" Grob Type NS18 Vertical Band Saw; s/n 10080 w/ Grob Type RW-B Blade Welder

18" Grob Type NS18 Vertical Band Saw; s/n 10080 w/ Grob Type RW-B Blade Welder

18" Grob Type NS18 Vertical Band Saw; s/n 10080 w/ Grob Type RW-B Blade Welder

SURFACE GRINDERS

16" x 36" Gallmeyer & Livingston Model 570 Rotary Surface Grinder; S/N 570102, Electro-Matic Magnetic Chuck

6" x 18" Boyar Schultz HR 618 Rotary Surface Grinder; S/N C-3049-HR

FURNACES

Lindberg Model 11-RO-183618-20A Rod Overbend Element Atmosphere Electric Box Furnace; S/N 25423, 33 K.W., 2,000 Max Temp., 18" W x 36" D x 18" H Work Dimensions

1,250 Degree Max Lindberg Model 152418-F12 Electric Furnace; s/n 20083, 17-KW, 3-Phase, 460-Volt, 16" x 26" x 18" High Chamber Size

INSPECTION

Deltronic DH 214 Optical Comparator; S/N N/A with MPC-5 DRO

Large Quantity of Inspection Equipment; Height Gauges, Micrometers, Indicator Stands, Granite Tables, Etc.



16" x 36" Gallmeyer & Livingston Model 570 Rotary Surface Grinder



12" DoAll C-9V Horizontal Band Saw

SALE DATE: THURSDAY OCTOBER 14TH STARTING AT 9:00 AM CT



(2) 3,000 LB Crown SC-4010-30TT190 Sit Down Electric Lift Truck



(2) 3,000 LB Clark TM15S Sit Down Electric 3-Wheel Lift Trucks



Tennant 355 LP Gas Sit Down Floor Sweeper

LP GAS LIFT TRUCKS

10,000 LB Hyster S100E LP Gas Solid Tire Lift Truck; S/N C004D05408B, 158.50

3,000 LB Yale Model GLC035AAU-UATO77 LP Gas Solid Tire Lift Truck; S/N A227451

ELECTRIC LIFT TRUCKS & RELATED

5,000 LB TCM Model FCB25A4 Electric Lift Truck; S/N 72T00106, 189" Max Lift, Cushion Tire, 36V

(2) **4,000 LB Crown Model RC3020-40 Electric Stand Up Lift Truck;** S/N 1A177141 & 1A177136, 190" Max Height, 89" 3-Stage Mast, Side Shifter, 36V

(2) **3,000 LB Crown SC-4010-30TT190 Sit Down Electric Lift Truck;** S/N 9A115918 & 9A115919 2-Stage Mast, 190" Lift Height, Side Shifter, 36V

3,000 LB Crown Model 30RCTT-S Electric Stand Up Lift Truck; S/N H-4259-2, 36V, 190" Max Lift Height, Side Shifter

(2) **3,000 LB Clark TM15S Sit Down Electric 3-Wheel Lift Trucks;** S/N TM24701478120FB & N/A, 188" Lift Height, 3-Stage Mast, 36V

1,500 Lb. Big Joe Model 1518-R7 Electric Die Lift Cart; s/n 83685, w/ Built-In Battery Charger

FLOOR SWEEPERS & SCRUBBERS

Tennant 355 LP Gas Sit Down Floor Sweeper; S/N 355-2304

Advance 320 HD Walk Behind Floor Scrubber; S/N N/A, 32"

Cleaning Path, 36V with APA 36V Charger

BATTERY CHARGERS & BATTERIES

(4) 36V Electric Battery Chargers by Exide, Ferro, GNB

(1) 24V Electric Battery Charger Spare 36V & 24V Batteries

PALLET RACK

(60) Sections 44" x 96" x 18' High Approx. Interlake Tear Drop Style Adjustable Beam Pallet Rack w/ Wire Decking

(30) Sections 44" x 132" x 14'/18' High Approx. Penco Adjustable Beam Pallet rack w/ Wire/Wood Decking

(4) Sections 42" x 96" x 12' High Approx. Tear Drop Style Adjustable Beam Pallet Rack w/ Wood Decking

(4) Sections 42" x 66" x 10' High Approx. Tear Drop Style Adjustable Beam Pallet Rack w/ Wood Decking

AIR COMPRESSOR & DRYER

75 HP Ingersoll Rand Model SSR-EP75 Rotary Screw Air Compressor; S/N F4816U92, 3-PH, 460-V

Ingersoll Rand Model D8501NA400 Refrigerated Air Dryer; S/N 554654

Hall Tank Co. Vertical Air Receiving Tank

(Lot) Misc. Air Compressor Spare Parts

STRETCH WRAPPER

Orion Rotary Stretch Wrapper; Model & S/N N/A

DUST COLLECTORS, BLOWERS, ETC.

SLY Model Venturi #8 Dust Collection System; S/N 20315 (2016) with 125 HP Air Industrial Tech. Corp Model 400 RT 30 CW 360 1Z Blower Fan, S/N 53675A and Clearstream Filters Model MMF-27-39 Filter; S/N 2042, Flow Serve Model MK3 STD Pump S/N 1223751CHP001A

(3) **Hammond Model DK-1455 DusKolector Dust Collection Systems**

CHILLERS & COOLING TOWERS

22 Ton Carrier Model 30RAN022B-611AB Chiller; S/N 4107Q03804, (2) Compressors, R-22 Refrigerant

(2) **Marley Aquatower Cooling Towers;** S/N's 147479-3-3861-B24541M-99

SHOP & SUPPORT EQUIPMENT

Large Quantity of Misc. Shop Equipment: Carts, Pallet Jacks, Mag Blocks, Drum Dollies, Shelving, Die Carts, Metro Carts, Ladders, Fans, Large Ceiling Fans, Maintenance & MRO Items, Spare Motors, Racking, Steel Inventory, Flammable Cabinets, Wire Baskets, (2) 2,000 Lb. Bux Model CM-3 Magnetic Toter, Shop Vac's, Die Lift Carts, (6) 48" x 97" x 36-1/2" High x 3/8" Thick Steel Top Plate Welded Frame Tables



75 HP Ingersoll Rand Model SSR-EP75 Rotary Screw Air Compressor



Ingersoll Rand Model D8501NA400 Refrigerated Air Dryer



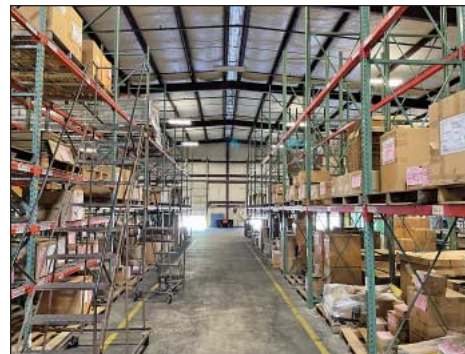
22 Ton Carrier Model 30RAN022B-611AB Chiller



(2) Marley Aquatower Cooling Towers



52" x 12 Ga. Wysong Model 1252 Power Squaring Shear



Large Quantity Adjustable Beam Pallet Rack

PUBLIC PUBLIC

AUCTION

PLANT CLOSED

Webcast Auction – Former Assets of Lighting Reflector Plant Featuring CNC Metal Spinning Lathes, Hydraulic & Mechanical Presses, Anodizing Lines, Polishing Systems, Fab Equipment, Robots, Lift Trucks, Toolroom Machinery, Pallet Rack and Large Quantity of Shop & Support Equipment

HUBBELL LIGHTING

216 Mims Drive
El Dorado, Arkansas 71730

SALE DATE:
THURSDAY, OCTOBER 14TH
STARTING AT 9:00 AM CT
INSPECTION: Wednesday, October 13th
from 10:00 AM to 4:00 PM



CINCINNATI
**INDUSTRIAL
AUCTIONEERS**

auctioneers | appraisers | since 1961

Contact Information
2020 Dunlap St.
Cincinnati, Ohio 45214
Phone 513-241-9701
Fax 513-241-6760
www.cia-auction.com

Cincinnati Industrial
Auctioneers Inc.
2020 DUNLAP STREET
CINCINNATI, OHIO 45214

Myron Bowling
Auctioneers Inc.
P.O. BOX 369
ROSS, OHIO 45061

PRE-SORT
FIRST CLASS
U.S. POSTAGE
PAID
CINCINNATI, OHIO
PERMIT NO. 3593

FIRST CLASS MAIL!



Important Mail

TO BE DIRECTED TO THE ATTENTION
OF EXECUTIVE PERSONNEL

PUBLIC PUBLIC

AUCTION

PLANT CLOSED

Webcast Auction – Former Assets of Lighting Reflector Plant Featuring CNC Metal Spinning Lathes, Hydraulic & Mechanical Presses, Anodizing Lines, Polishing Systems, Fab Equipment, Robots, Lift Trucks, Toolroom Machinery, Pallet Rack and Large Quantity of Shop & Support Equipment

HUBBELL LIGHTING

216 Mims Drive
El Dorado, Arkansas 71730

IMPORTANT NOTICE:

Although information has been obtained from sources deemed reliable, the auctioneer makes no warranty or guarantee, expressed or implied, as to the accuracy of the information herein contained. It is for this reason that buyers should avoid themselves of the opportunity to make inspection prior to the sale. This brochure is intended to provide general information of the equipment being offered and is subject to errors, omissions, additions or deletions. Please check with the Auctioneer's Office for a final listing. Items offered may or may not necessarily be sold as described and/or photographed in this brochure.

MAIL BIDS ACCEPTED WITH A 25% DEPOSIT

TERMS OF SALE

All equipment described herein will be sold "as is", "where is" to the highest bidder or bidders for cash in accordance with our regular terms and conditions of sale. Unless other satisfactory arrangements are made, a 25% deposit in cash, certified or cashier's check payable to Cincinnati Industrial Auctioneers, Inc., is required on all purchases. Firm and personal checks accepted only if accompanied by a letter from your bank guaranteeing your funds. All sales are subject to state and/or local taxes unless a signed exemption form is presented at the time of purchase. All balances are due at the conclusion of the sale. No merchandise may be removed while the sale is in progress. All bidders must comply with our Standard Terms of Sale, copies of which will be available at the sale site or can be obtained from our website.

DIRECTIONS

From downtown El Dorado, take Main St/US HWY 63 East. Turn Right onto Industrial Road. Drive Approx. 1 Mile to Cooper Dr, turn Left. Continue around the bend and the auction site is on the right.

AUCTIONEER

Jeffrey L. Luggen – License No. 1691
Joseph M. Luggen – License No. 2287



18% ONLINE BUYERS PREMIUM



CINCINNATI
**INDUSTRIAL
AUCTIONEERS**

cia-auction.com • Phone 513-241-9701



MYRON BOWLING
AUCTIONEERS, INC.

myronbowling.com • Phone 513-738-3311